



SAIVEN SIX SENSES



About Us

With a rich history spanning over a decade in the real estate industry, Saiven has consistently exceeded our clients' expectations by delivering exceptional value. Our core principles revolve around a deep commitment to design excellence and unwavering focus on quality, forming the bedrock of our organizational philosophy.



Darshan Reddy
Founder

There are few moments in life that stay with you forever. One such moment for me was during the Covid-19 lockdown, when I first stepped onto this land. I remember walking quietly around the serene Kasavanahalli Lake, talking in the silence, the breeze, and the sense of calm that washed over me. I told myself then — "This is where I would want to live." That one walk planted the seed for what would become Saiven Six Senses.

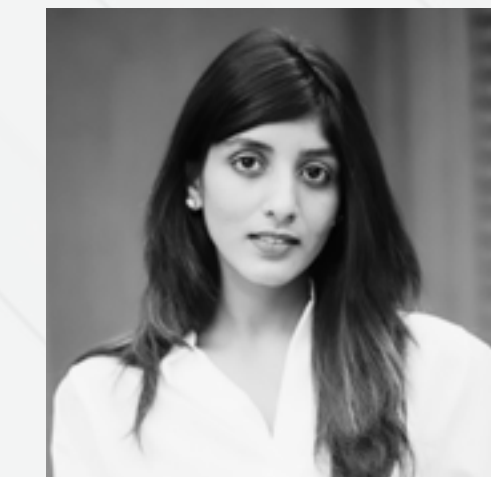
This project is deeply personal. From the moment I fell in love with this site, I knew it had to be more than just another development. It had to be our crown jewel — a space where design meets soul, where nature embraces you, and where every return home feels like a retreat.

We named it Six Senses with purpose — to create a home that elevates the human experience, where every sense is touched with care: sight, sound, smell, taste, touch, and above all, feeling. Every time I visit the land, it still gives me that same positive energy — a warmth and radiance that I believe will become part of every resident's life.

At Saiven, we don't believe in mass-producing homes. We believe in building one great project at a time — with care, intention, and relentless attention to detail. Construction is not just my business, it's my passion — and I believe that passion is best expressed through the quality of our work. Every Saiven development stands as testimony to this belief.

With Six Senses, we aim to set a new benchmark for boutique living in Bengaluru. Our vision is to be among the city's most trusted and passionate boutique developers — known not for how many homes we build, but for how beautifully we build them.

We hope Six Senses becomes more than a home for you — a place that resonates with life, meaning, and joy. A home that truly touches your senses.



Soumya Reddy
Co-Founder

As first-generation real estate entrepreneurs, we set out with a vision—to make a difference. We didn't just want to build houses; we wanted to craft homes. Homes that reflect care, individuality, and a sense of **belonging**.

Saiven Six Senses is incredibly close to our hearts. It represents more than just a project—it's the realization of a dream. A boutique development where every detail speaks of our commitment to quality, thoughtful design, and a deep respect for the people who will one day call it **home**.

Nestled beside a serene lake and cradled by lush greenery, Saiven Six Senses is a sanctuary where nature speaks to you—softly, soulfully. Wake up to the gentle ripple of water, the song of birds gliding across the sky, and the rustle of leaves dancing with the breeze. This is not just a place to live—it's a place to feel **alive**.



The Soul of Kasavanahalli



Sight Awakens

Sun drench hues on Kasavanahalli blues,
Pelicans dance, a feathered ballet's grace.
Panoramic windows, a verdant embrace,
Where nature's canvas sets a calming pace.

Sound Finds Solace

The city's din fades to a distant hum,
Replaced by whispers as gentle winds come.
Water's soft murmur, a lullaby's strum,
A symphony of nature, serenity to welcome.





Smell Breathes Easy

Fragrant gardens, a perfumed delight,
Blooming jasmines fill the air, pure white.
Clean, crisp breezes, a pollutant's flight,
Invigorating breaths, a sensory delight.

Taste Savors Pure

Food's essence, a symphony anew,
Fresh air awakens every flavor, subtle and true.
Organic bounty, nurtured with morning dew,
Homegrown herbs and greens, a culinary view.





Touch Embraces

Textures whisper, a story untold.
Marble's coolness, warmth of wood to unfold.
Handcrafted finishes, a masterpiece bold.
Every surface a comfort, a story to unfold.

Home, The Sixth Sense

A sanctuary's embrace.
Where senses converge, in a joyful space.
Nature's orchestra sets a calming pace.
A haven for the soul, a magical place.





Where Architecture Meets the Water's Edge

Saiven Six Senses sits by a quiet lake, bringing nature closer to everyday living. Each home is planned for light, ventilation, and clear views.



Nature's Calm Meets Thoughtful Design

A serene lakeshore invites you to unwind, where the gentle ripple of water meets lush gardens meticulously crafted for peace and privacy.



Spaces That Bring Life Together

Beyond your doorstep, thoughtfully designed communal areas invite connection and relaxation. Landscaped gardens, walking paths.



Spaces Beyond Walls

Shared spaces connect the whole, guiding movement with purpose. Roads and cycle tracks weave through landscaped areas that balance open and sheltered.



Closer to the Ground

Water runs through the heart of the space, edged with green and quiet detail. A soft curve meets the surface, where a few figures pause. Above and below.



Spaces That Flow

Designed as a layered experience, the layout moves from water to walkway, from entry to elevation. Each section is planned with purpose, allowing circulation, gathering, and pause.



Built Among Trees

Rising quietly above the green, the structure holds its shape in brick and grey. Balconies step out, windows look far, and trees find their place even on the roof.



Paths, Pool and Pause

The layout places water at the heart of shared experience. Open seating, layered greens, and shade work in balance.



Life Seen From Above

Amid trees and open water, a cluster of homes comes into view. Facades shift between brick and grey, with balconies that open to the sky. A quiet pool rests on a rooftop.



A Visual Delight

Gaze upon the tranquil waters of the lake, where sunlight dances and birds glide in graceful flight. Verdant landscapes stretch before you, a living canvas of beauty.





A Profound Melody
The world whispers softly here—leaves rustle, birds sing, and the gentle murmur of the lake fills the air. The sounds of nature replace the urban noise.



A Breath of Serenity

Breathe in the pure, fragrant air as lush gardens release the delicate perfume of blooming flowers. Each inhale is a moment of calm, inviting meditation and mindfulness.



A Flavorous Reminiscence

The crisp air transforms every bite, making even the simplest meal a feast for the senses. Fresh fruits and organic delights burst with flavor.



Your Home, Your Sensory Sanctuary

Your home at "Six Senses" is the sixth sense—an all-encompassing sanctuary that amplifies each sensory experience. Here, you don't just live—you feel.



Master Bedroom A Thoughtful Composition

Here, space and light come together with quiet intent. Surfaces and textures speak softly, inviting a sense of ease without overt display. Storage finds its place without interrupting the flow.



Room for Routine

Some spaces carry a quiet purpose. They are built to hold focus without forcing it, to welcome movement without noise. Machines are placed with care.

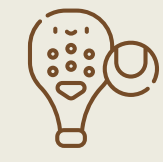


Amenities

Ground Floor



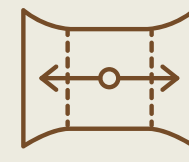
Kids' Play Area



Pickleball & Basketball Courts



Multipurpose Hall



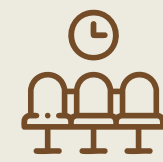
Elevated Viewing Deck



Bio-pond



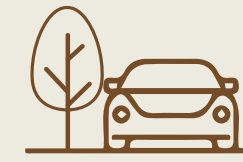
Outdoor Workstations



Elegant Waiting Lounge



Vehicular Drop-off Zone

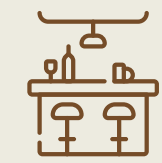


Visitor Parking Under Tree Shade

Ninth Floor Terrace



Life-Size Chess & Classic Board Games



Event Space with Bar Counter



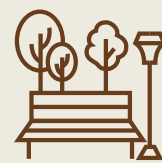
Open-Air Theatre



Infinity Pool & Kids' Pool



Meditation Pavilion in Herb Garden



Spill-Out Spaces



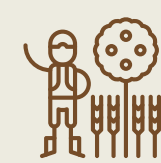
Jacuzzi



Sauna

Tenth Floor

Terrace Floor



Elders' Sensory Garden



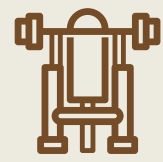
Lakeview Decks



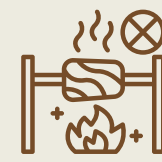
Organic Vegetable Garden



Yoga Pavilion with Medicinal Plants



Rooftop Gym



Bonfire Nook



Specifications

Structure

- RCC framed structure with 6 inches porotherm block Masonry for external walls and 4 inches solid block masonry for internal walls.

Flooring

- Vitrified tiles for living and dining area and bedroom.
- Wooden laminate flooring for master bedroom.
- Ceramic tiles for kitchen, utility and bathroom.

Main Doors

- Teak veneered door frame with teak veneered panel door of standard design pattern with melamine polish. Good quality CP hardware fixtures and branded door locks.

All Other Doors

- Hardwood Frame with Engineered Shutters and good quality hardware fixtures.

Windows

- Two track Laminated UPVC Windows.

Painting

Internal walls: Two coats of putty would be applied over one coat of primer followed by two coats of Asian Paints or equivalent brand emulsion paint with roller finish.

External walls: One coat primer of Asian Paints water proof exterior paint followed by two coats of Asian Paints or equivalent brand waterproof exterior paint. Texture paint wherever applicable.

Sanitary Fittings

- Kohler CP & Kohler Sanitary or equivalent make.

Electrical Work

- ISI brands like Finolex/Anchor or equivalent fire resisting wires for lighting and heating circuits with ISI branded PVC conduits.
- Modular switches of Anchor Roma or equivalent brand will be provided.



Elders Park

Rooftop Gym

Yoga Pavilion

Lake View Decks

Lake View Decks

Fire Pit

Fruit/Vegetable Garden

Infinity Pool

Jacuzzi

Outdoor Game Zone

Spill-Out Spaces

Meditation Pavilion

Multipurpose Space

Fruit/Vegetable Garden

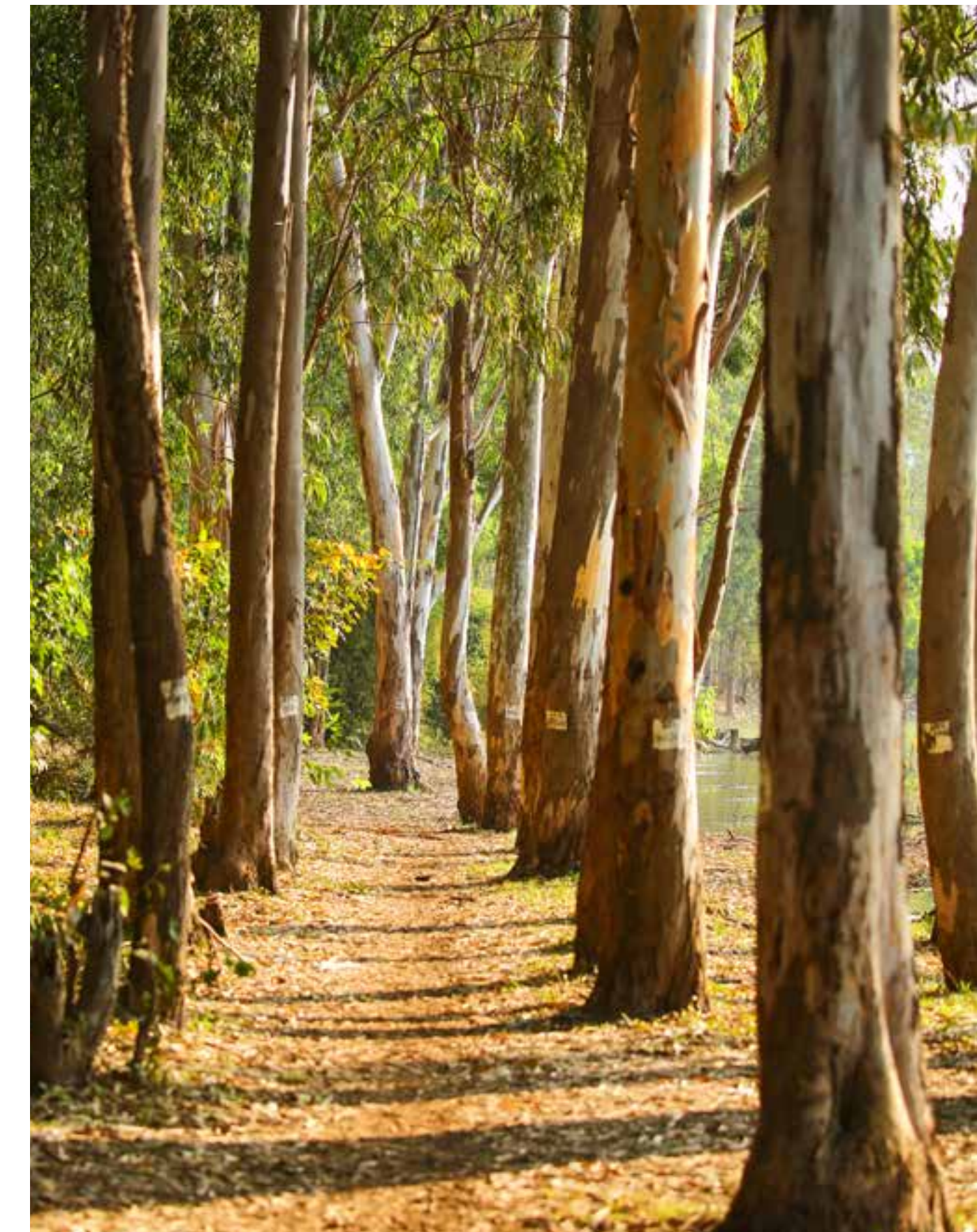
Open Air Theatre



Shot at Lake

Sunset Over Kasavanahalli

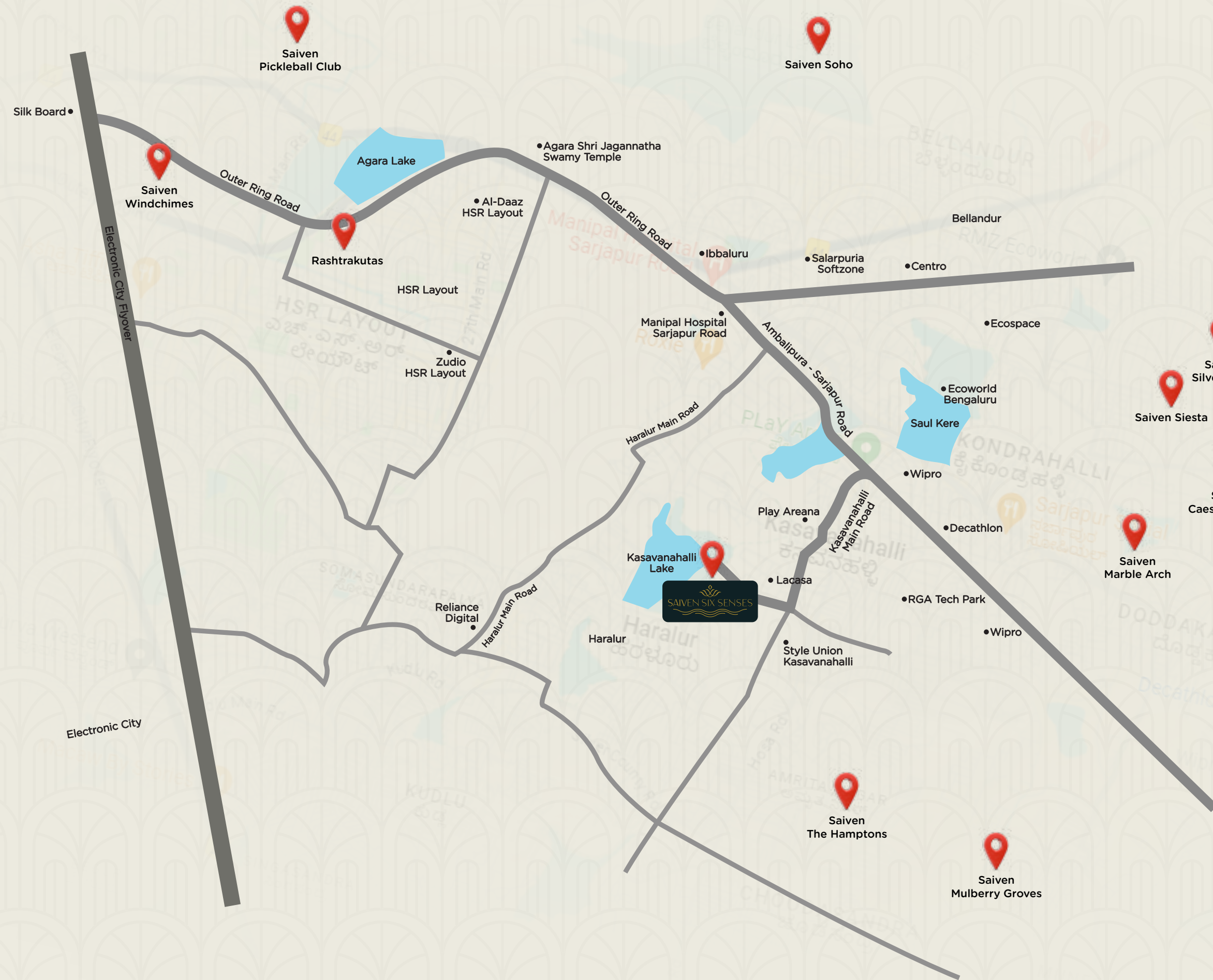
Evening light spills across the lake, shifting with each passing breeze. Reflections stretch long where water meets sky without edge. The horizon holds its silence, as day closes without hurry.



Nature Within Reach

Planned paths wind through curated greens, designed to slow the pace. Native trees frame each turn, soft underfoot and open to sky. Species flourish where light meets shade.

Location



Developments of Saiven Group

Residential




Scroll into Marble Arch for a glimpse of the English way of life. Sagapur Road, Bangalore.




4G State of the art Roman Style Row Houses. Sagapur Road, Bangalore.




Resort living of 44 premium villas spread over 2 acres of pure indulgence. Sagapur Road, Bangalore.




Luxury Apartments Chembenhalli Village. Sagapur Road, Bangalore.




Affordable Luxury Apartments Chembenhalli Village. Sagapur Road, Bangalore.




Ideal home for peace lovers of old Bangalore. HSR layout, Bangalore.




Saiven Mulberry Groves Luxury Villas Muthanallur. Sagapur Road, Bangalore.

Commercial

SAIVEN
SOHO

Hospitality



Sports Arena





RERA No. - PRM/KA/RERA/1251/446/PR/290525/007795

Saiven Six Senses
#20, Lakeshore Homes, Kasavanahalli Main Road,
Bangalore, Karnataka - 560035

Saiven Developers and Constructions Pvt Ltd,
#1664, 2nd Floor, 27th Main, 2nd Sector, HSR Layout,
Bangalore - 560102, India.

© www.saivendevelopers.com © 888 4444 560